



# Horse & Buddy

## Therapeutic Riding Program



2020

**SAFETY • PROFESSIONALISM • COMPASSION • RESPECT • FUN!**



### OUR RIDERS:

**134**  
RIDERS SERVED

**2111**  
RIDES GIVEN

**100%**

**WOULD RECOMMEND THE PROGRAM TO OTHERS**



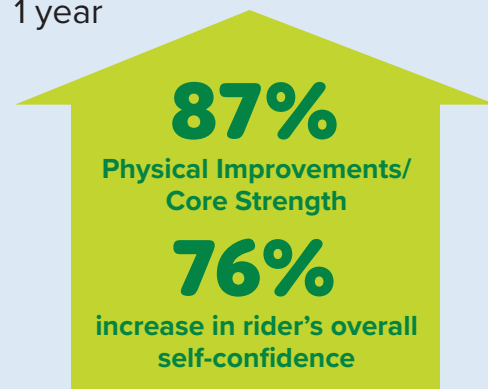
### OUR MISSION:

**Horse and Buddy** enriches the lives of children and adults with special needs through equine assisted therapies and activities in a safe and caring environment.

### OUR RESULTS:

Riders time in program:

<b>6%</b>	<b>43%</b>	<b>51%</b>
Less than 1 year	1-3 years	4+ years



Improvements based on parent/caregiver survey responses.

## COVID-19 UPDATE:

2020 was a year of incredible highs and lows. For *Horse and Buddy*, shutting down for 2.5 months and losing our beloved barn cats were the lowest of lows. Our barn drive-through, welcoming riders back to the saddle, our virtual gala, our first annual golf classic, our “horse show in place,” and your unflagging support of us were unbelievable highs. As we struggle with the fatigue and uncertainty brought on by this pandemic, celebrating these victories has helped make everything else manageable.

In November, we asked our volunteers and rider parents/caregivers, “How do you feel about the way **Horse and Buddy** has handled the COVID-19 pandemic?” Here’s what we heard:

**“THANK YOU. We literally could not come back to the barn yet if you were not taking all of the precautions you are. Masks, all the cleaning, distancing, allowing parents to be sidewalkers, etc. All of it matters, and all of it allows Horse and Buddy to continue being a safe environment for us during the pandemic. It’s our only in-person activity right now!”** —Parent

**“Horse & Buddy has/is managing the COVID crisis amazingly well. Safety measures are at once obvious (making parents and staff and volunteers feel totally comfortable) and subtle (making riders feel like all is as right and fun as ever). This balance is wonderful for all—a testament to the organizational skills and humanity of Horse & Buddy.”** —Volunteer

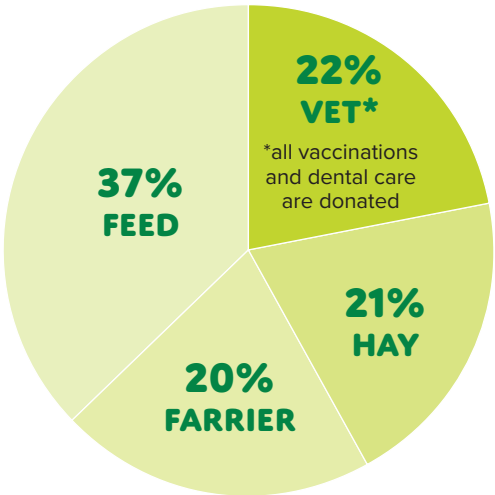
Safety has always been our #1 priority, but it definitely took on a new meaning this year. We will continue taking as many precautions as we find necessary until we get to the other side of this pandemic later in 2021.

# OUR HORSES:

1 THERAPY HORSE PROVIDES AN AVERAGE OF 30 RIDES PER MONTH



Our “equine staff” were given to us by generous horse owners who wanted to give back to their community and also wanted to be sure their horses were safe and had the quality care **Horse and Buddy** provides. Here is a breakdown of our equine expenses:



*“Having a safe place that truly welcomes my son as he is in all aspects is something so hard to come by and so needed. As a parent, I also feel like a part of the community and have bonded with several staff, volunteers, and other families.”*  
—Parent

*“I love taking my son to go riding. It gives him joy, and that makes me happy. His improved strength and confidence in movement has made him more independent, which also makes me happy.”* —Parent

*“Horse & Buddy meets all riders where they are in their development, embracing them with the respect and love that help them to grow stronger and more confident physically and emotionally. Horse & Buddy is an amazingly supportive extended circle of family and friends to all riders and their parents.”* —Volunteer

# OUR VOLUNTEERS:

3558  
VOLUNTEER HOURS

100-150  
# OF VOLUNTEERS

How long have you been a volunteer at **Horse and Buddy**?

29%

Less than 1 year

56%

1-3 years

9%

4-9 years

6%

10+ years

Would you recommend the program to others?

100%



TYPES OF DISABILITIES SERVED

- AUTISM
- ANXIETY
- CEREBRAL PALSY
- DEVELOPMENTAL DELAY
- OTHER PHYSICAL & COGNITIVE DISABILITIES